

KLIER DENTAL

PRICES VALID FROM 1.4.2022

KLIER NÁBYTEK S.R.O.
KE ŠKOLE 21
377 01 JINDŘICHŮV HRADEC
CZECH REPUBLIC
E-MAIL: INFO@KLIERNABYTEK.CZ
WWW.KLIERDENTAL.EU



PRICE LIST OF DENTAL FURNITURE



TECH MINI

PC WITHOUT VAT

* BASE CABINET WITH PULL-OUT TRASH CAN, 1 CONTAINER	1	963 €
* BASE CABINETS 5 DRAWERS	2	711 €
* BASE CABINET CAUTERY	1	546 €
* WALL CABINET - CUPS, GLOVES, TOWELS, TRAYS, PC	1	1 430 €
WORKTOP WITH BASIN AND SCREEN POLYSTON	1	3 567 €
FAUCET	1	224 €
SOAP DISPENSER	1	93 €
BLUM SERVODRIVE FOR TRASH CAN	1	584 €
BLUM SERVODRIVE FOR AVENTOS HL	1	849 €
BLUM TIP-ON	2	91 €
LED LIGHTING	1	375 €
TOTAL PRICE WITHOUT VAT		10 235 €

* PRICE FOR MATTE FINISH. FULL GLOSS FINISH IS MORE EXPENSIVE.



TECH

PC WITHOUT VAT

* BASE CABINET WITH PULL-OUT TRASH CAN, 2 CONTAINERS	2	1 028 €
BASE CABINETS 5 DRAWERS	2	711 €
BASE CABINET CAUTERY	1	546 €
* WALL CABINET - GLOVES, TOWELS, TRAYS	1	988 €
* WALL CABINET - CUPS, GLOVES, TOWELS, TRAYS	1	1 033 €
WORKTOP WITH BASINS AND SCREEN POLYSTON	1	4 763 €
FAUCET	2	545 €
SOAP DISPENSER	4	93 €
BLUM SERVODRIVE FOR TRASH CAN	2	584 €
BLUM SERVODRIVE FOR AVENTOS HL	2	849 €
BLUM TIP-ON	1	93 €
LED LIGHTING	2	227 €
TOTAL PRICE WITHOUT VAT		15 643 €

* PRICE FOR MATTE FINISH. FULL GLOSS FINISH IS MORE EXPENSIVE.



DECOR

PC WITHOUT VAT

* BASE CABINET WITH CHROME TRASH CAN	1	1 028 €
* BASE CABINET 1 DOOR	1	374 €
TRASH CAN MADE FROM PLASTIC AND STAINLESS STEEL	1	92 €
* BASE CABINETS 5 DRAWERS	2	711 €
* BASE CABINET CAUTERY	1	546 €
* WALL CABINET - CUPS, GLOVES, TOWELS, TRAYS	1	795 €
POSTFORMING WORKTOP	1	703 €
BUILT-IN CERAMIC BASIN	2	409 €
FAUCET	2	224 €
LED LIGHTING	1	175 €

TOTAL PRICE WITHOUT VAT 6 433 €

* PRICE FOR MATTE FINISH. FULL GLOSS FINISH IS MORE EXPENSIVE.



WOOD

PC WITHOUT VAT

* BASE CABINET WITH CHROME TRASH CAN	1	1 028 €
* BASE CABINET WITH PULL-OUT TRASH CAN, 2 CONTAINERS	1	1 028 €
* BASE CABINETS 5 DRAWERS	2	711 €
* BASE CABINET CAUTERY	1	546 €
* WALL CABINET - CUPS, GLOVES, TOWELS, TRAYS	1	795 €
POSTFORMING WORKTOP	1	703 €
BUILT-IN CERAMIC BASIN	2	409 €
FAUCET	2	224 €
BASE CABINETS CASING	1	1 097 €
UPPER CABINETS CASING	1	196 €
LED LIGHTING	1	208 €

TOTAL PRICE WITHOUT VAT 8 287 €

* PRICE FOR MATTE FINISH. FULL GLOSS FINISH IS MORE EXPENSIVE.



STANDARD

PC WITHOUT VAT

* BASE CABINET WITH CHROME TRASH CAN	1	1 028 €
* BASE CABINET 1 DOOR	1	374 €
TRASH CAN MADE FROM PLASTIC AND STAINLESS STEEL	1	92 €
* BASE CABINETS 6 DRAWERS	2	754 €
* BASE CABINET CAUTERY	1	546 €
* WALL CABINET - CUPS, GLOVES, TOWELS, TRAYS	1	795 €
POSTFORMING WORKTOP	1	703 €
STAINLESS STEEL BASIN RONDOLINE	2	372 €
FAUCET	2	224 €
SOAP DISPENSER	4	93 €
SCREEN INCLUDING SEALING PROFILE	1	634 €
TOTAL PRICE WITHOUT VAT		7 242 €

* PRICE FOR MATTE FINISH. FULL GLOSS FINISH IS MORE EXPENSIVE.



PC POINT A

WITHOUT VAT

PC POINT	5 647 €
KEYBOARD CK3-17 USB	527 € *
MONITOR BENQ 24''	288 € *
MINI PC LENOVO	582 € *
MAGIC MOUSE APPLE	100 € *
TOTAL PRICE WITHOUT VAT	7 144 €



PC POINT B

WITHOUT VAT

PC POINT	4 929 €
KEYBOARD CK3-17 USB	527 € *
MONITOR BENQ 24''	288 € *
MINI PC LENOVO	582 € *
MAGIC MOUSE APPLE	100 € *
TOTAL PRICE WITHOUT VAT	6 426 €



PC POINT C

WITHOUT VAT

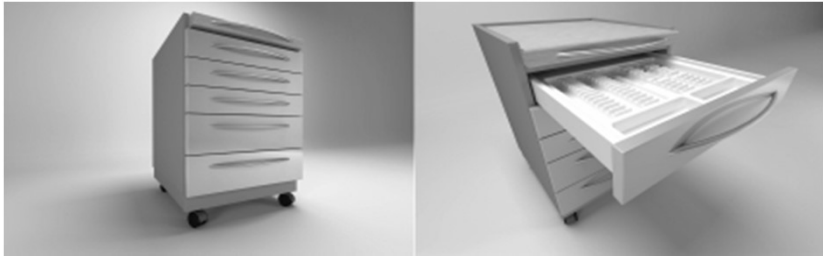
PC POINT	5 743 €
KEYBOARD CK3-17 USB	527 € *
MONITOR BENQ 24''	288 € *
TOTAL PRICE WITHOUT VAT	6 558 €

CURRENT MARKET PRICES MAY VARY. *

KLIER DENTAL

PRICE LIST OF DENTAL FURNITURE

EUR



STANDARD

* MOBILE ASSISTANT STANDARD

WITHOUT VAT

932 €

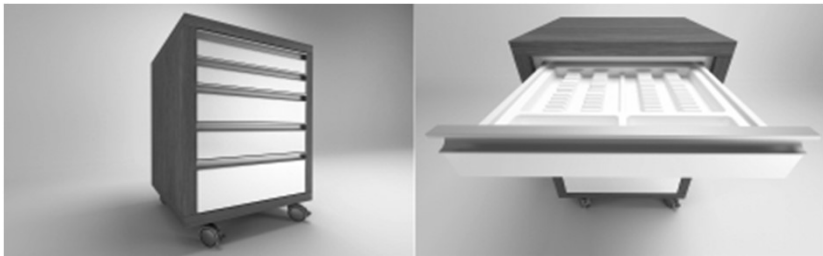


DECOR

* MOBILE ASSISTANT DECOR

WITHOUT VAT

932 €



WOOD

* MOBILE ASSISTANT WOOD

WITHOUT VAT

1 196 €

* PRICE FOR MATTE FINISH. FULL GLOSS FINISH IS MORE EXPENSIVE.

KLIER DENTAL

PRICE LIST OF DENTAL FURNITURE

EUR



TECH MINI

* MOBILE ASSISTANT TECH MINI

WITHOUT VAT

1 302 €



TECH

* MOBILE ASSISTANT TECH

WITHOUT VAT

1 363 €



TECH - FULL GLOSS DESIGN

MOBILE ASSISTANT TECH IN FULL GLOSS DESIGN

WITHOUT VAT

1 456 €

* PRICE FOR MATTE FINISH. FULL GLOSS FINISH IS MORE EXPENSIVE.

KLIER DENTAL

PRICE LIST OF DENTAL FURNITURE

EUR

LEFT

RIGHT



* **UPPER CUPBOARDS A 1800 HL**

180 CM LONG

MANUAL OPENING WITH AVENTOS HL

WITHOUT VAT

1 430 €

LEFT

RIGHT



* **UPPER CUPBOARDS B 1800 HL**

180 CM LONG

MANUAL OPENING WITH AVENTOS HL

WITHOUT VAT

1 637 €

LEFT

RIGHT



* **UPPER CUPBOARDS C 1800 HL**

180 CM LONG

MANUAL OPENING WITH AVENTOS HL

WITHOUT VAT

1 430 €

* PRICE FOR MATTE FINISH. FULL GLOSS FINISH IS MORE EXPENSIVE.

KLIER DENTAL

PRICE LIST OF DENTAL FURNITURE

EUR

LEFT

RIGHT



* **UPPER CUPBOARDS D 1300 HL**

130 CM LONG

MANUAL OPENING WITH AVENTOS HL

WITHOUT VAT

1 033 €

LEFT

RIGHT



* **UPPER CUPBOARDS D 1300 HK**

130 CM LONG

MANUAL OPENING WITH AVENTOS HK

WITHOUT VAT

1 033 €

LEFT

RIGHT



* **UPPER CUPBOARDS E 1000 HK**

100 CM LONG

MANUAL OPENING WITH AVENTOS HK

WITHOUT VAT

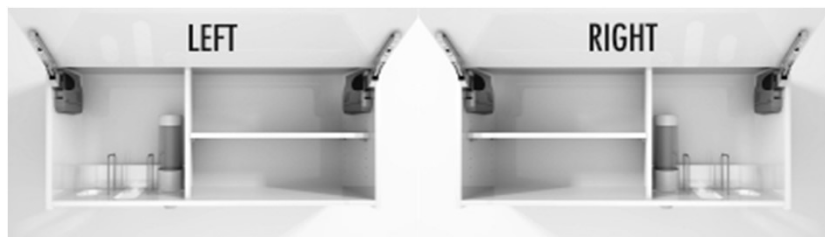
795 €

* PRICE FOR MATTE FINISH. FULL GLOSS FINISH IS MORE EXPENSIVE.

KLIER DENTAL

PRICE LIST OF DENTAL FURNITURE

EUR



* UPPER CUPBOARDS F 1000 HK

100 CM LONG
MANUAL OPENING WITH AVENTOS HK

WITHOUT VAT
758 €



* UPPER CUPBOARDS G 1000 HK

100 CM LONG
MANUAL OPENING WITH AVENTOS HK

WITHOUT VAT
704 €



* UPPER CUPBOARDS H 1000 HK

100 CM LONG
MANUAL OPENING WITH AVENTOS HK

WITHOUT VAT
586 €

* PRICE FOR MATTE FINISH. FULL GLOSS FINISH IS MORE EXPENSIVE.

KLIER DENTAL

PRICE LIST OF DENTAL FURNITURE

EUR

WITHOUT VAT

AUTOMATIC OPENING AND CLOSING SERVODRIVE FOR AVENTOS **849 €**

LED LIGHTING IN A RECESSED ALUMINIUM PROFILE WITH LUMINOUS LED, INCLUDING THE POWER SUPPLY. WITHOUT SWITCH. (LED LIGHT ARE SEPARATELY FOR EACH WALL CABINET) **LENGTH 100 CM 208 €**

LED LIGHTING IN A RECESSED ALUMINIUM PROFILE WITH LUMINOUS LED, INCLUDING THE POWER SUPPLY. WITHOUT SWITCH. (LED LIGHT ARE SEPARATELY FOR EACH WALL CABINET) **LENGHT 130 CM 270 €**

LED LIGHTING IN A RECESSED ALUMINIUM PROFILE WITH LUMINOUS LED, INCLUDING THE POWER SUPPLY. WITHOUT SWITCH. (LED LIGHT ARE SEPARATELY FOR EACH WALL CABINET) **LENGHT 180 CM 375 €**

POTS HOLDER **45 €**

STAINLESS STEEL SPACE FOR WELL ORGANISED PLACEMENT OF IMPRESSIONS TRAYS **207 €**

DENTAL INSERTS 1: ZV 1, ZV 2, ZV 3, ZV 4, ZV 5 **40 €**

DENTAL INSERTS 3: ZV 740-400, ZV 751-400, ZV 753-400 **56 €**

DENTAL INSERTS 3: ZV 750-400, ZV 752-400, ZV 743-400 **63 €**

DENTAL INSERTS 3: ZV 741-400, ZV 742-400 **65 €**

DENTAL INSERTS 3: ZV 755-400 **47 €**

DENTAL INSERTS 4: ZV 751-500, ZV 753-500, ZV 754-500 **56 €**

DENTAL INSERTS 4: ZV 750-500, ZV 752-500, ZV 758-500 **63 €**

DENTAL INSERTS 4: ZV 755-500 **65 €**

DENTAL INSERTS 4: ZV 756-500, ZV 757-500 **74 €**

KLIER DENTAL

PRICE LIST OF DENTAL FURNITURE

EUR



TECH MINI

* PENDANT PC TABLE TECH MINI

WITHOUT VAT

1 597 €



TECH

* PLINTH PC TABLE TECH

WITHOUT VAT

1 774 €



TECH - FULL GLOSS DESIGN

PLINTH PC TABLE TECH IN FULL GLOSS DESIGN

WITHOUT VAT

1 952 €

* PRICE FOR MATTE FINISH. FULL GLOSS FINISH IS MORE EXPENSIVE.

KLIER DENTAL

PRICE LIST OF DENTAL FURNITURE

EUR



DECOR

* PLINTH PC TABLE DECOR

WITHOUT VAT

1 093 €

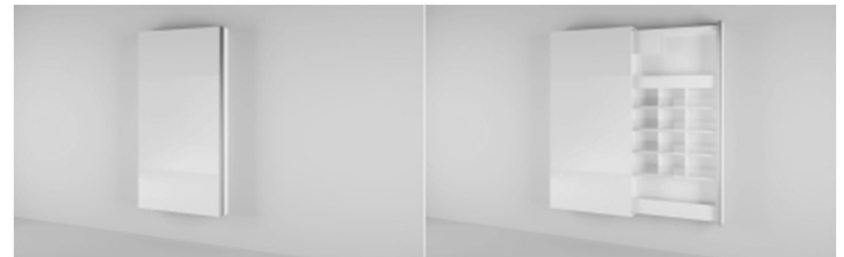


X-RAY PC CABINET

* PENDANT PC CABINET

WITHOUT VAT

982 €



X-RAY CABINET

* PENDANT X-RAY CABINET

WITHOUT VAT

2 013 €

* PRICE FOR MATTE FINISH. FULL GLOSS FINISH IS MORE EXPENSIVE.